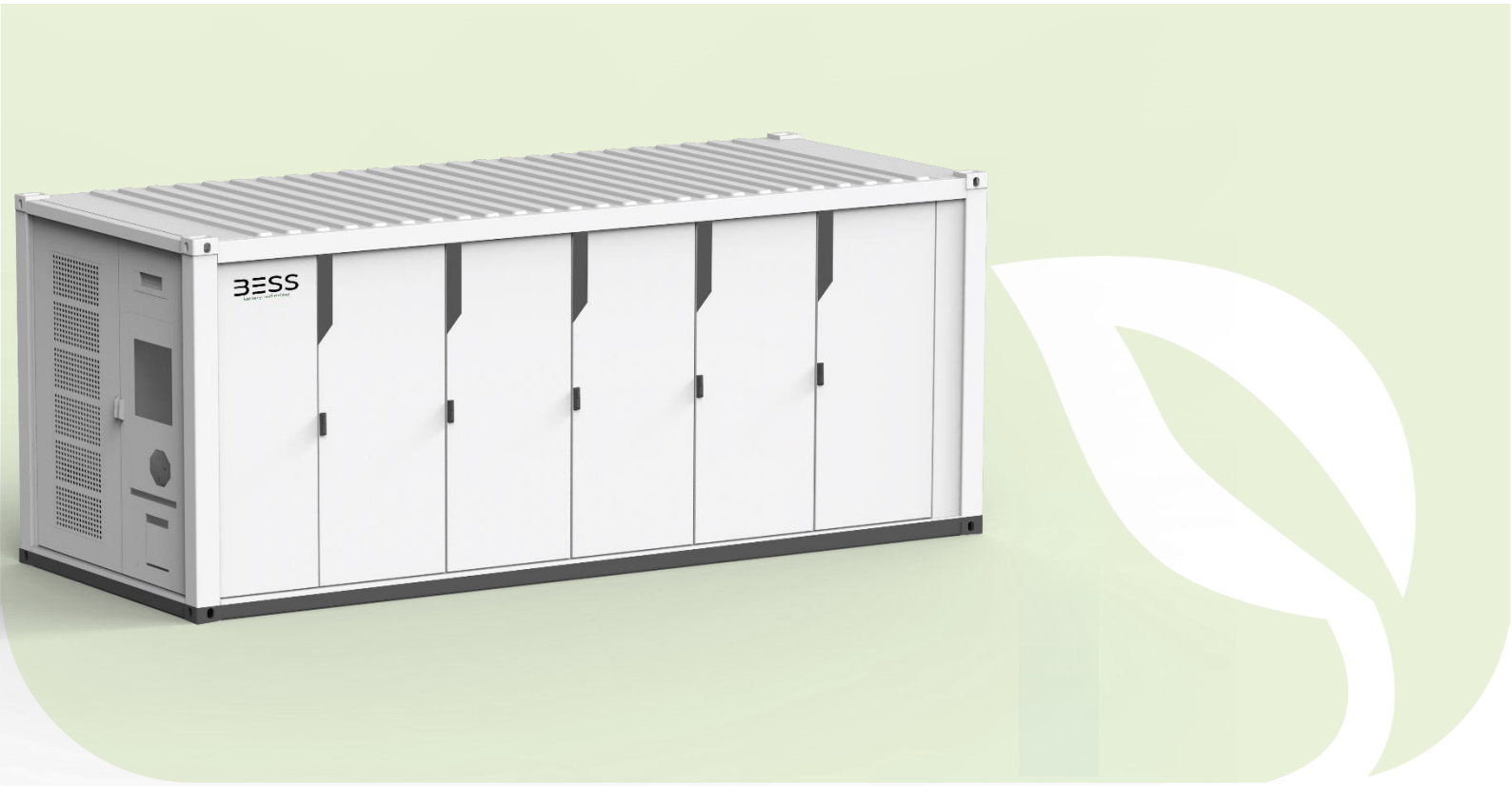






Containerized Air Cooling ESS VE-3M



Features

-  **SAFE AND RELIABLE**
 - Approved industry certification of Cell pass test by UL/IEC
 - Multi-level design for fire control
 - Built-in early warning detection system
 - IP 54 rating for enclosure
-  **EFFICIENT AND DURABLE**
 - Industry leading LFP cell technology up to 10,000 cycles with high thermal stability
 - Modular battery and cooling equipment are designed for better temperature control
-  **ENHANCED MONITORING CONTROL**
 - Integrated performance control for local and remote monitoring.
 - Data logging for component level status monitoring.
 - Real-time system operation analysis on terminal screen.
-  **SMART AND SCALABLE**
 - Modular design supports ease of installation, expansion, and maintenance
 - ESS self-diagnosis and healing function
 - Supports remote maintenance and upgrades

TECHNICAL SHEETS ARE SUBJECT TO CHANGE WITHOUT NOTICE.

Battery Parameters	
Cell Type	LFP 3.2 V/ 280 Ah
Configuration	1P 240S *15
Nominal Capacity	3 MWh
Rated DC Voltage	768 Vdc
DC Voltage Range	672 ~ 864V
BMS Communication Interface	Ethernet
AC Parameters	
AC Nominal Power	1125 kVA
THDi	<3% (rated power)
DC Component	<0.5%
Rated Grid Voltage	400 Vac, 3W+N+PE
Grid Voltage Range	-20%~+15%
Power Factor	>0.99
Adjustable Power Factor	-1(leading)~+1(lagging)
Operating Grid Frequency	50/60Hz
Grid Frequency Range	± 5 Hz
Isolation Type	Isolated
Basic Parameters	
Enclosure Dimensions (W*H*D)	12192*2438*2591 mm
Weight	~37T
Enclosure IP Rating	IP54
Operating Temperature	-20℃~+50℃
Relative Humidity	0~95%, non-condensing
Max. Altitude (above sea level)	2000m (>3000m derating)
Battery Cooling Mode	HVAC and Air cooling
PCS Cooling Mode	Intelligent forced air cooling
Fire Suppression System	Aerosol, combustible gas detection & exhaust, water firefighting (optional)
Communication Interface	RS485, Ethernet, CAN
Communication Protocol	Modbus TCP, Modbus RTU, CAN2.0
Standard & Certification	IEC 62619, IEC 61000, IEC 63056, UN38.3, MSDS, RoHS, IEC 62477

TECHNICAL SHEETS ARE SUBJECT TO CHANGE WITHOUT NOTICE.